

Hammer-Hewson Associates
255 Maple Court
Ventura, CA 93003
(805) 650-6700
www.hhaventura.com

April 2019

| INDUSTRIAL WAREHOUSE UNITS FOR LEASE | | | | |
|---|------------------|-------------------|-------------------------|---------------------|
| Size | Address | Unit No. | Lease Rate (psf) | Monthly Rent |
| 1997 sq ft | 1884 Eastman Ave | Unit 109 | \$1.05 | \$ 2,095 |
| 2125 sq ft | 1884 Eastman Ave | Unit 111 | \$1.05 | \$ 2,230 |
| 3139 sq ft | 1756 Eastman Ave | Unit 113 | \$1.05 | \$ 3,315 |
| | | | | |
| | | | | |
| OFFICE SUITES FOR LEASE | | | | |
| Size | Address | Office No. | Lease Rate (psf) | Monthly Rent |
| | | | | |
| NO VACANCIES | | | | |

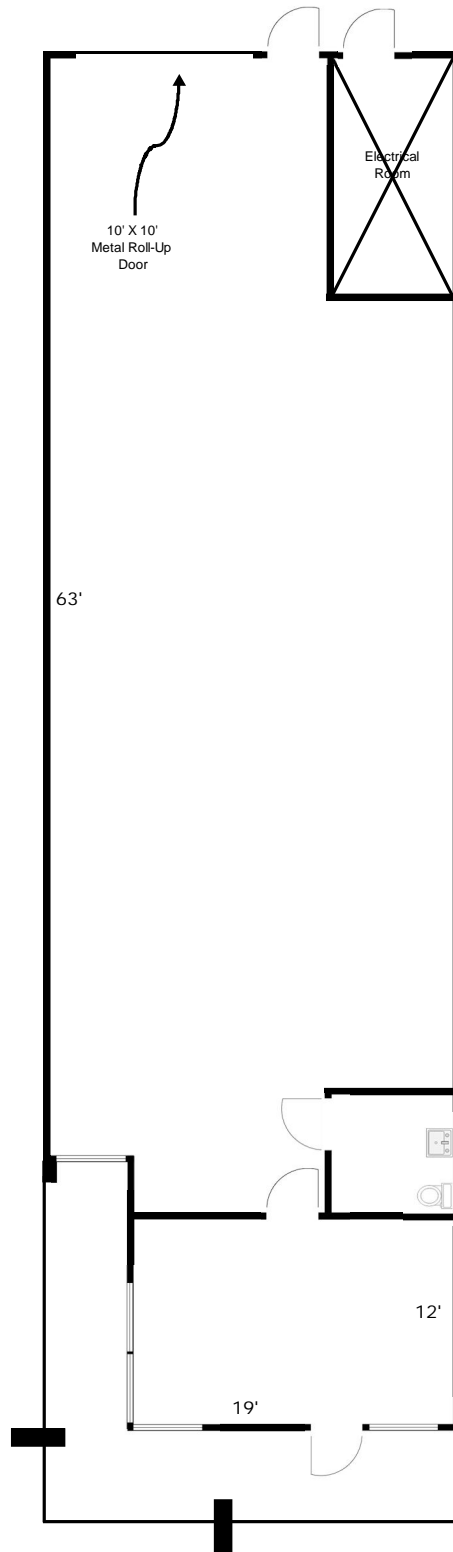
No Common Area Maintenance Fees
Any broker who brings or refers a client to Hammer-Hewson will be given a full commission.

For more information visit our website at:
www.hhaventura.com

Contact:
Randy Wuerth
644-1019 or 650-6700
rdw@hhaweb.com

Hammer-Hewson Associates
255 Maple Court, Suite 200
Ventura, California 93003

Hammer - Hewson Associates
www.hhaventura.com
Leasing Info: Randy Wuerth
(805) 650-6700
rdw@hhaweb.com



1884 Eastman Ave, Unit 109 (1,997 Sq Ft)

Scale: 1" = 10'-0" (Dimensions are approximate)

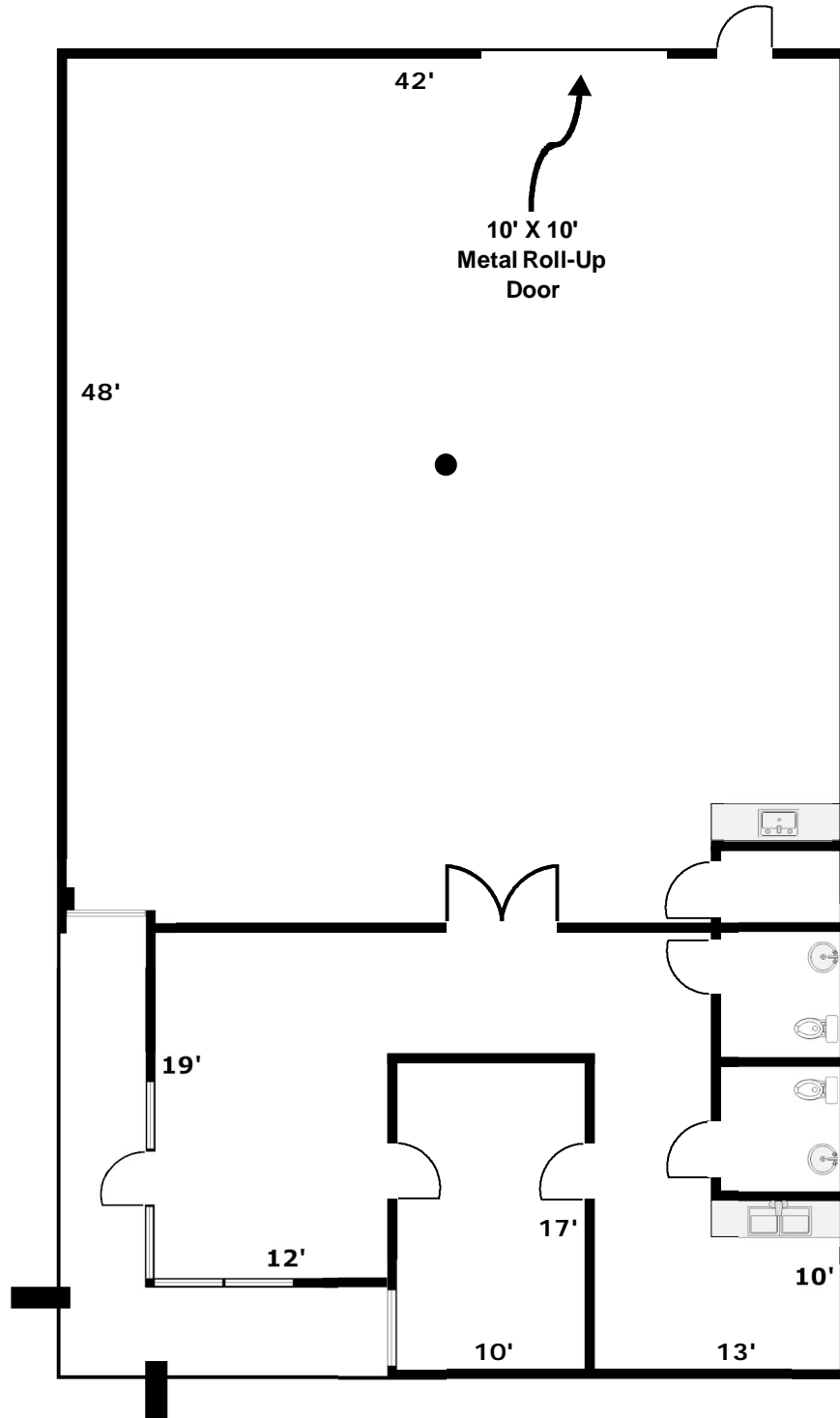
Hammer - Hewson Associates
www.hhaventura.com
Leasing Info: Randy Wuerth
(805) 650-6700
rdw@hhaweb.com



1884 Eastman Ave, Unit 111 (2,125 Sq Ft)

Scale: 1" = 10'-0" (Dimensions are approximate)

Hammer - Hewson Associates
www.hhaventura.com
Leasing Info: Randy Wuerth
(805) 650-6700
rdw@hhaweb.com



1756 Eastman Ave, Unit 113 (3,139 Sq Ft)

Scale: 1" = 10'-0" (Dimensions are approximate)