

Hammer-Hewson Associates
255 Maple Court
Ventura, CA 93003
(805) 650-6700
www.hhaventura.com

February 2019

INDUSTRIAL WAREHOUSE UNITS FOR LEASE				
Size	Address	Unit No.	Lease Rate (psf)	Monthly Rent
1997 sq ft	1884 Eastman Ave	Unit 109	\$1.05	\$2095
2125 sq ft	1884 Eastman Ave	Unit 111	\$1.05	\$2230
3139 sq ft	1756 Eastman Ave	Unit 113	\$1.05	\$3315
OFFICE SUITES FOR LEASE				
Size	Address	Office No.	Lease Rate (psf)	Monthly Rent
NO VACANCIES				

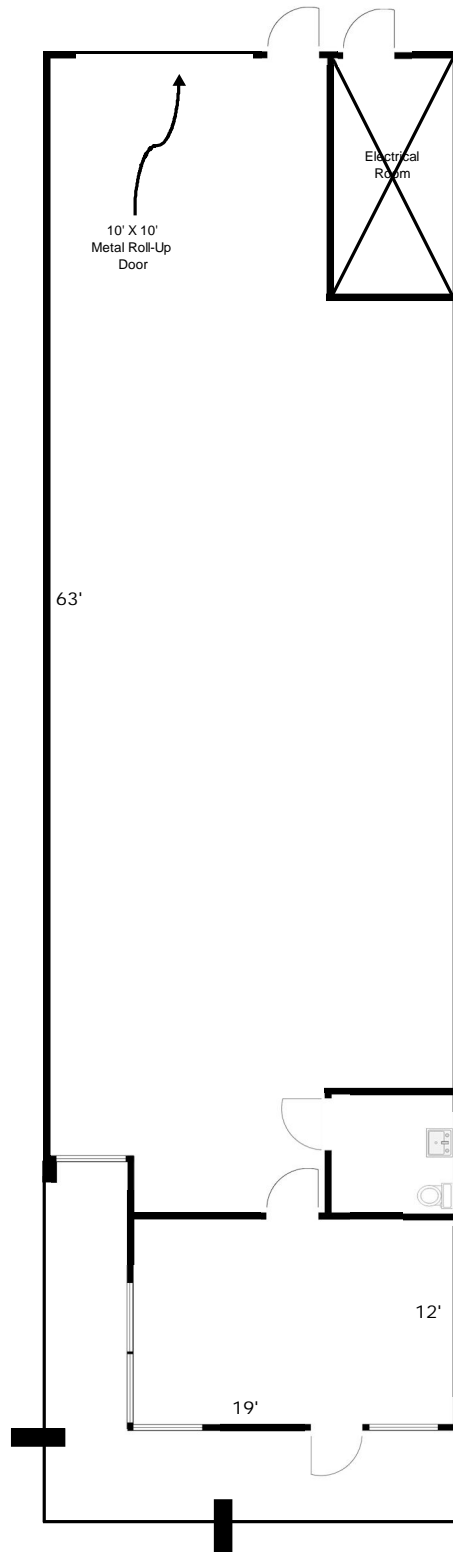
No Common Area Maintenance Fees
Any broker who brings or refers a client to Hammer-Hewson will be given a full commission.

For more information visit our website at:
www.hhaventura.com

Contact:
Randy Wuerth
644-1019 or 650-6700
rdw@hhaweb.com

Hammer-Hewson Associates
255 Maple Court, Suite 200
Ventura, California 93003

Hammer - Hewson Associates
www.hhaventura.com
Leasing Info: Randy Wuerth
(805) 650-6700
rdw@hhaweb.com



1884 Eastman Ave, Unit 109 (1,997 Sq Ft)

Scale: 1" = 10'-0" (Dimensions are approximate)

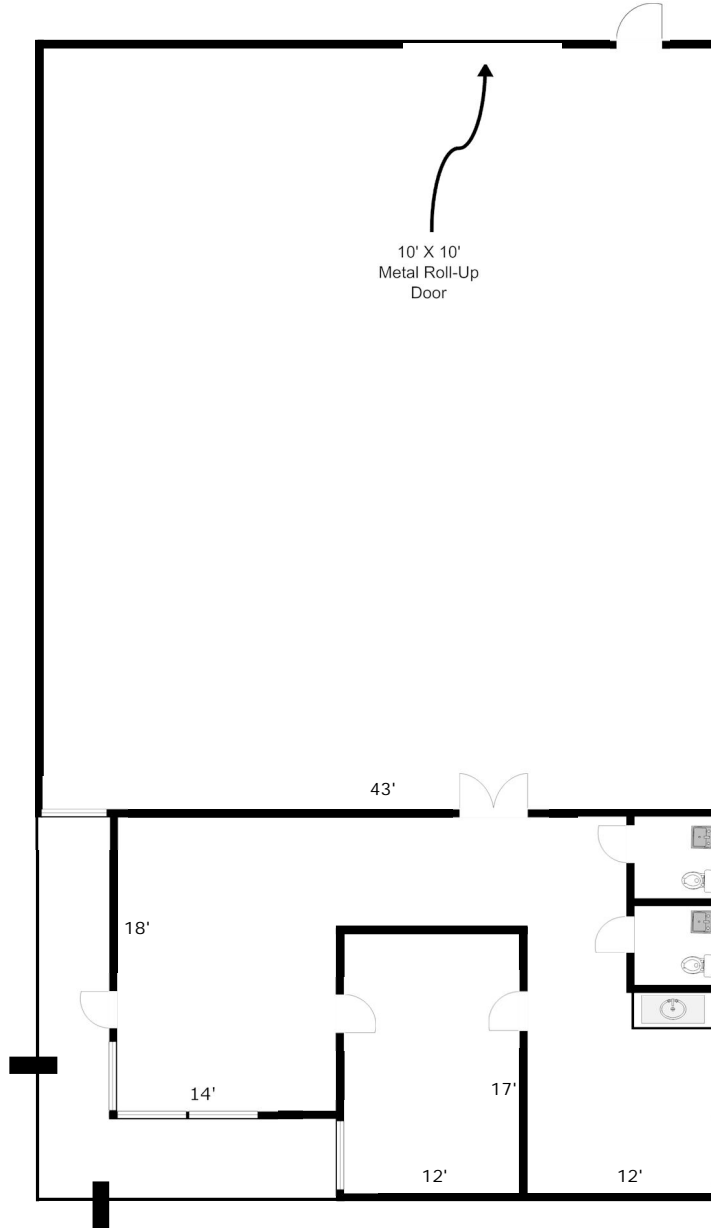
Hammer - Hewson Associates
www.hhaventura.com
Leasing Info: Randy Wuerth
(805) 650-6700
rdw@hhaweb.com



1884 Eastman Ave, Unit 111 (2,125 Sq Ft)

Scale: 1" = 10'-0" (Dimensions are approximate)

Hammer - Hewson Associates
www.hhaventura.com
Leasing Info: Randy Wuerth
(805) 650-6700
rdw@hhaweb.com



1756 Eastman Ave, Unit 113 (3,139 Sq Ft)

Scale: 1" = 10'-0" (Dimensions are approximate)